

**INSTRUMENT APPROACH CHART**

**AERODROME ELEV 5558' HEIGHTS RELATED TO THR RWY 21R - ELEV 5505'**

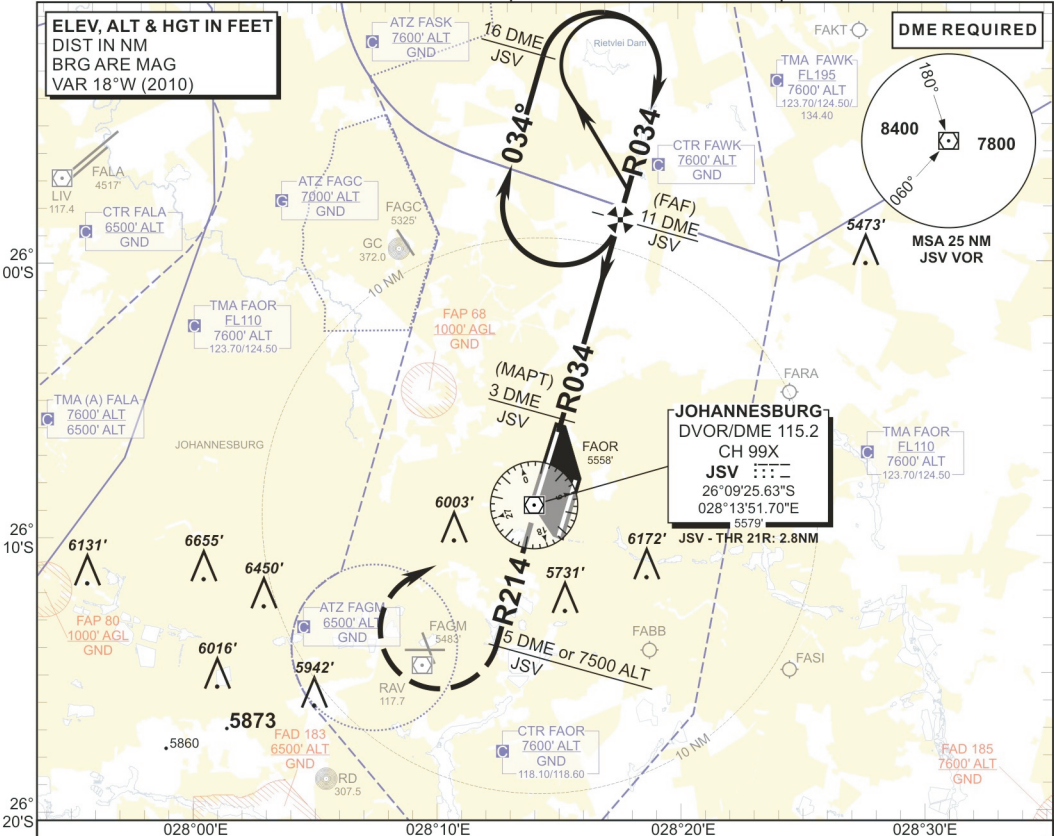
RADAR APP S 124.50  
E 124.50  
W 123.70  
TWR E 118.60  
W 118.10

ATIS 126.20  
115.20  
SMC 121.90

**JOHANNESBURG (O.R. TAMBO INTERNATIONAL) VOR Z RWY 21R CAT A - D**

**ELEV, ALT & HGT IN FEET  
DIST IN NM  
BRG ARE MAG  
VAR 18°W (2010)**

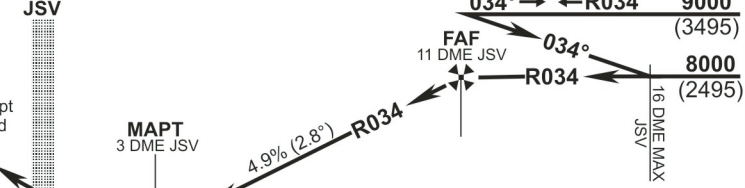
**DMEREQUIRED**



JSV DME	8	7	6	5	4	3
ADVISORY ALT (HGT)	7110 (1605)	6810 (1305)	6510 (1005)	6210 (705)	5920 (415)	5620 (115)

TRANSITION ALT 8000  
TRANSITION LEVEL ATC DVOR/DME  
INA ALT: 9000

**MISSED APPROACH:**  
Climb on R214 JSV to 7500 ALT or 5 DME south whichever is later. At 7500 ALT or 5 DME JSV, whichever later, turn right to JSV climbing to FL090. At JSV intercept R034 JSV (OUBD) to 11 DME and re-enter the hold or as directed.



**THR ELEV 5505  
NM to/from THR RWY 21R**

					<b>GS</b>	80	100	120	140	160		
					JSV 11DME to THR	M:S	6:09	4:55	4:06	3:31	3:04	
					Straight-in Approach	Rate of descent	FPM	398	497	597	696	796
					<b>NOTE:</b> 1. Procedure Turn Approach applicable only within 30° of the OUBD HDG. Use phraseology "Request Procedure Turn Approach".							
Circling	WEST OF RWY 03/21	6070 (565)		6410 (905)								
	EAST OF RWY 03/21	6050 (545)		6250 (745)								

CHANGE: Profile View Altitude